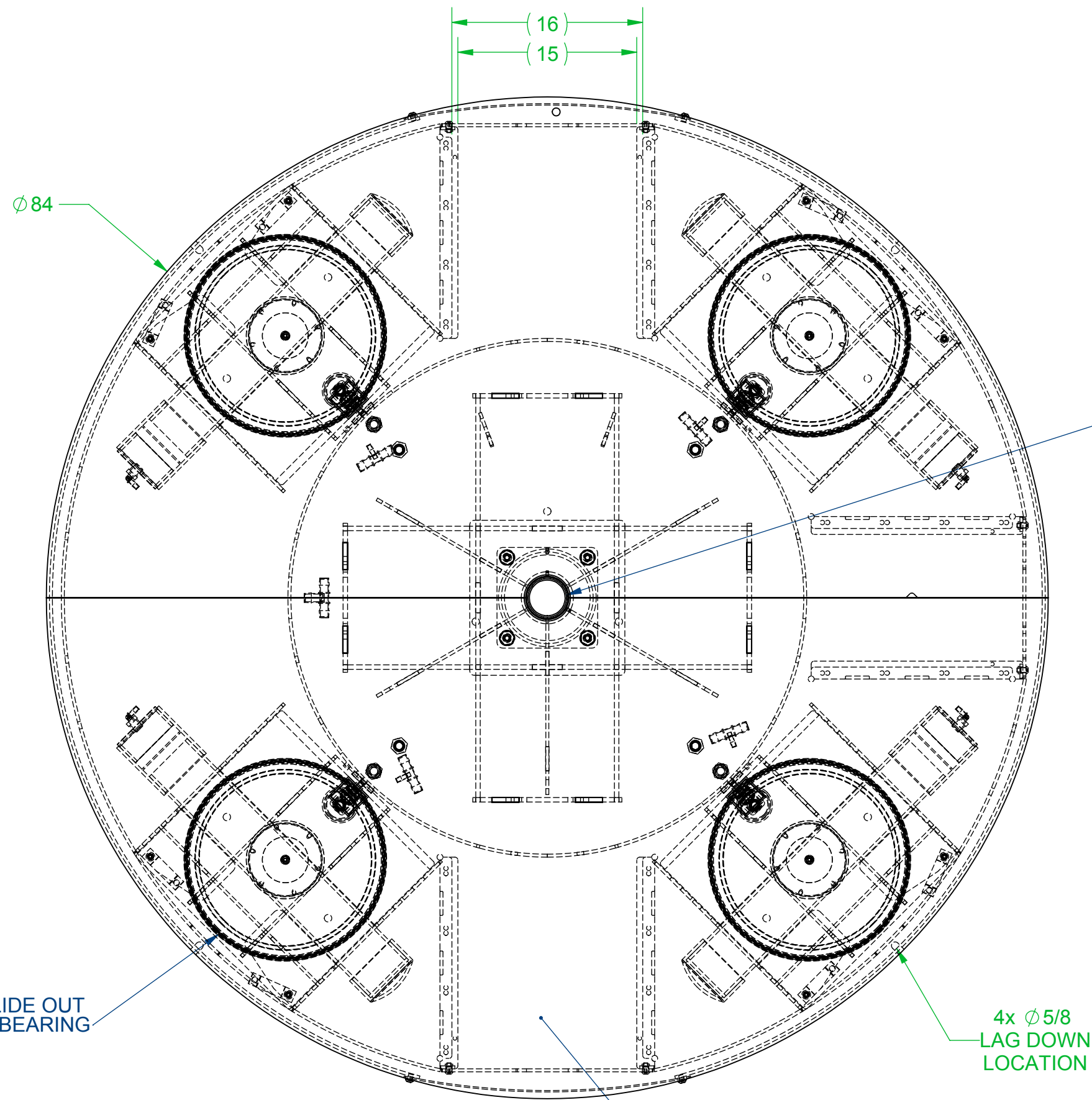


REVISIONS				
ZONE	REV.	DESCRIPTION	DATE	REV. BY



GREASE CENTER PIVOT BEFORE ASSEMBLING TOP OF TURNTABLE WITH BASE

4x 17" SLIDE OUT AIR BEARING

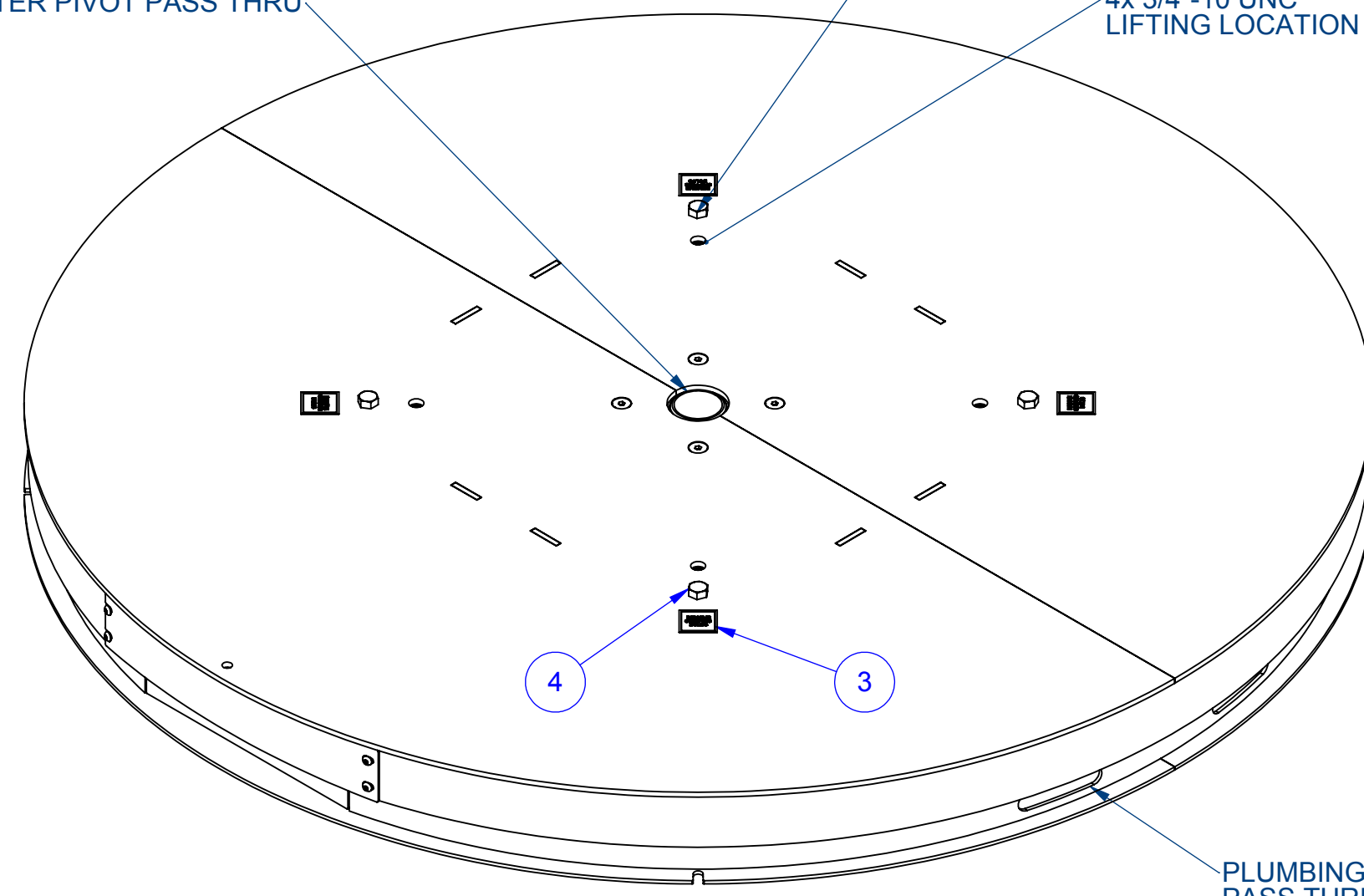
4x Ø5/8 LAG DOWN LOCATION

OPTIONAL ACCESSORIES

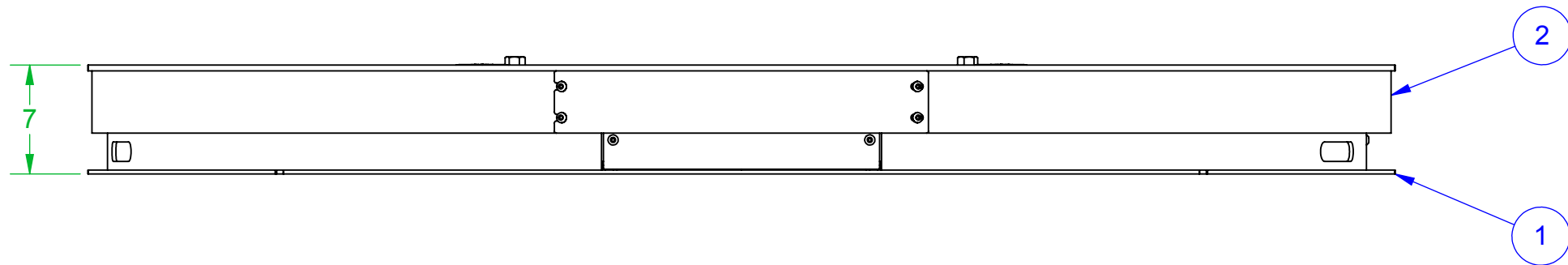
CENTER PIVOT PASS THRU

4x SHIPPING BOLTS

4x 3/4"-10 UNC LIFTING LOCATION



PLUMBING PASS THRU



NOTES:  
HOSE AND CLAMPS NOT SHOWN

QTY.	SYM.	PART NUMBER	NOMENCLATURE OR DESCRIPTION	MATERIAL SPEC.	WIDTH	LENGTH	ROUTING	WEIGHT
4	4	BHH12C28	HEX HEAD BOLT 3/4-10 x 7	GR 5		7	P	0
4	3	DCL0153-01	DECAL REMOVE SHIPPING BOLTS		2 3/8	2 3/8	P	0
1	2	TTT-0001	Ø84" ROUND TURNTABLE TOP MODEL				A	751.78
1	1	TTB-0001	Ø84" TURNTABLE BASE MODEL				A	797.34

DISCARD ALL DRAWINGS AND/OR BILL OF MATERIALS ISSUED PRIOR TO  
**6/1/2018**  
USE PRINT WITH THE LATEST DATE FOR PRODUCTION  
ENGR. APPROVAL \_\_\_\_\_

UNLESS OTHERWISE SPECIFIED DIMENSIONS ARE IN INCHES TOLERANCES ARE:  
FRACTIONS: ± 1/16  
DECIMALS: .XX ± .03  
ANGULAR: .XXX ± .010 ± 1°  
DO NOT SCALE DRAWINGS

WORK ORDER #	ROUTING
DRAWN PAB	4/15/2014
TOTAL WT. 1549.66 lbs	SHEET 1 OF 1

2230 Brush College Rd  
Decatur, IL 62526  
www.alignproduction.com  
sales@alignprod.com  
Phone: 217.423.6001

**ALIGN**  
PRODUCTION SYSTEMS

TITLE: Ø84" REGULAR DUTY TURNTABLE WITH 4 Ø17" AIR BEARINGS

SIZE C SCALE 1:10 DRAWING NO. X040-0010 REV. --04